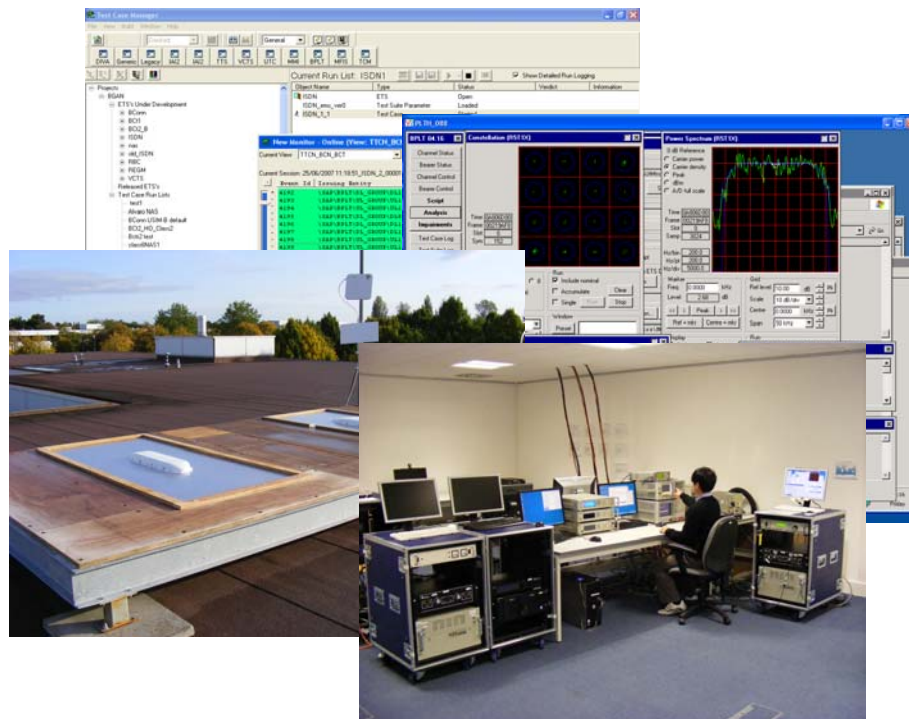


BGAN Terminal Testing and Approval Services Delivering your BGAN



Type Approval testing

Interworking

Field Trials

Test planning and execution

Inmarsat's latest BGAN system provides a step change in data rates and functionality compared to all previous services, combining packet and circuit-switched functionality, mobility and 3G services in one fully-integrated product. Multiple User Terminal classes offer a wide spectrum of capabilities, trading off size, weight, cost and performance.

Such capabilities come at a price in the cost and complexity of development and testing. The necessary test equipment must be procured, and staff have a significant learning curve to climb for what can sometimes be relatively infrequent campaigns. *But now all this can be changed.*

Combining the test facilities and equipment required for performing laboratory-based testing, with in-depth expertise and experience in RF, protocol and service-based testing, we are confident that we can help you deliver your BGAN product faster and more cheaply to market.

Having worked on the type approval and over-the-air interworking of leading BGAN Aeronautical products since 2003, e2E is in a unique position to offer a one-stop shop for all your BGAN test and type approval needs.

BGAN Terminal Testing and Approval Services Delivering your BGAN

e2E Satcom's Wireless Interoperability Lab (WIL) offers the following capabilities to configure and run all the Inmarsat BGAN Mandatory Test Requirements (MTRs) on your equipment:

- Physical Layer MTRs on the SquarePeg BPLT
- Protocol MTRs on the Livewire BPT (including test USIMs)
- Voice Codec MTRs on the DVSI VCTS
- ISDN and CSUP MTRs
- USIM interface tests
- Doppler testing
- Environmental testing (including RTCA DO-160E Temperature, Vibration, Humidity and Power Input)

This laboratory-based testing is complemented by the following consultancy services:

- Requirements for test equipment automation interfaces
- Preparation of Pre-Conditional, Conditional and Full Type Approval Plans
- Analysis of results and generation of complete test reports
- Working closely with your engineering teams, we understand your product in depth, feed back problems and advise on solutions
- Direct liaison with Inmarsat to agree plans, review results, resolve script and tool issues, discuss corrective actions for the terminal, and request waivers wherever appropriate
- Detailed scheduling and status reporting

While bench testing proves air interface conformance, your product must also functionally interwork with the BGAN network, and deliver the performance that users will expect. To this end, we offer:

- Preparation of over-the-air test plans, requirements and procedures
- Over-the-air test execution and reporting
- Planning and assistance with field trials on land, sea and air
- Application software and equipment
- Performance monitoring tools
- Test automation
- Liaison with network staff for provisioning and test tracing

All of the above can be performed at our own test facilities, in complete confidence, or on-site to suit your programme. We pride ourselves on the flexibility and responsiveness to meet the needs of a fast-moving development, from one-off deliverables to full turn-key solutions. This can be backed by BGAN system engineering, requirements management and training tailored to your specific needs and environment.

Contact us today to deliver *your* BGAN.

Contact Greg Howard at:

e2E Satcom Ltd
63 Cherry Orchard East
Kembrey Park
Swindon
Wilts SN2 8UQ
UK

Tel: +44 (0)1793 521205
Mob: +44 (0)7939 511162

E-mail: greghoward@e2esatcom.co.uk
Web: www.e2esatcom.co.uk

